

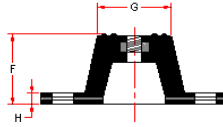
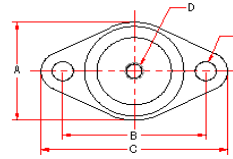


M / S . N.R. RUBBER INDUSTRIES.

7 SOUTH TANGRA ROAD, KOLKATA – 700046. INDIA.

Mob: 94330 98940, 98743 19408

Email: nr.rubber@yahoo.com Web: www.nrrubberindustry.com



RUBBER - IN- SHEAR MOUNT(DOUBLE DEFLECTION)

MODEL NO. - NRRSM - 108

INSOLATOR MODEL	MAX LOAD (LBS.)	DEFLECTION (INCHES)	DIMENSIONS (INCHES)								COLOR	S / A
			A	B	C	D	E	F	G	H		
NRRSM - 108 - A - 1	30	1/2	1 3/4	2 3/8	3 1/8	5/16	11/32	1 1/4	1 3/8	3/16	BLUE	40° ± 5°
NRRSM - 108 - A - 2	40	1/2	1 3/4	2 3/8	3 1/8	5/16	11/32	1 1/4	1 3/8	3/16	RED	55° ± 5°
NRRSM - 108 - A - 3	70	1/2	1 3/4	2 3/8	3 1/8	5/16	11/32	1 1/4	1 3/8	3/16	GREEN	65° ± 5°
NRRSM - 108 - A - 4	115	1/2	1 3/4	2 3/8	3 1/8	5/16	11/32	1 1/4	1 3/8	3/16	BLACK	75° ± 5°
NRRSM - 108 - B - 1	130	1/2	2 3/8	3	3 7/8	3/8	11/32	1 3/4	1 3/4	7/32	BLUE	40° ± 5°
NRRSM - 108 - B - 2	165	1/2	2 3/8	3	3 7/8	3/8	11/32	1 3/4	1 3/4	7/32	RED	55° ± 5°
NRRSM - 108 - B - 3	235	1/2	2 3/8	3	3 7/8	3/8	11/32	1 3/4	1 3/4	7/32	GREEN	65° ± 5°
NRRSM - 108 - B - 4	375	1/2	2 3/8	3	3 7/8	3/8	11/32	1 3/4	1 3/4	7/32	BLACK	75° ± 5°
NRRSM - 108 - E - 1	200	1/2	2 3/8	3 1/8	4	3/8	1/2	2	1 3/4	1/4	BLUE	40° ± 5°
NRRSM - 108 - E - 2	300	1/2	2 3/8	3 1/8	4	3/8	1/2	2	1 3/4	1/4	RED	55° ± 5°
NRRSM - 108 - E - 3	400	1/2	2 3/8	3 1/8	4	3/8	1/2	2	1 3/4	1/4	GREEN	65° ± 5°
NRRSM - 108 - E - 4	500	1/2	2 3/8	3 1/8	4	3/8	1/2	2	1 3/4	1/4	BLACK	75° ± 5°
NRRSM - 108 - F - 1	750	1/2	3 5/8	4 3/4	5 7/8	1/2	9/16	3 1/2	2 3/4	3/8	BLUE	40° ± 5°
NRRSM - 108 - F - 2	1000	1/2	3 5/8	4 3/4	5 7/8	1/2	9/16	3 1/2	2 3/4	3/8	RED	55° ± 5°
NRRSM - 108 - F - 3	1500	1/2	3 5/8	4 3/4	5 7/8	1/2	9/16	3 1/2	2 3/4	3/8	GREEN	65° ± 5°
NRRSM - 108 - F - 4	2200	1/2	3 5/8	4 3/4	5 7/8	1/2	9/16	3 1/2	2 3/4	3/8	BLACK	75° ± 5°

NOTES

1. Models NRRSM - E and NRRSM - F have rectangular bases.
2. Nuts, Washer and Rods by others.

FEATURES

- * Anti-skid top and bottom surfaces.
- * Mounting holes furnished as standard.
- * Embedded steel plates for uniform loading.
- * Oil + water resistant element (NBR for oil resistant & Natural for water resistant)
- * High deflection, low natural frequency.
- * Polymer color indicate the hardness of the materials.

